

In This Issue

Click on headlines for more detail...

Welcome to the first edition of the JBA Alert!

Planning reform discussion paper

Subregional strategies released

Growth centres moving ahead

Planning panel for Ku-ring-gai

New city strategies and LEPs

Julie Bindon appointed as Planning Institute President

JBA Projects Update

JBA Activities

JBA Staff

For more information and feedback on this newsletter, please contact Kathryn Werner on:
T: 02 9956 6962
E: jbaalert@jbaplanning.com.au
W: www.jbaplanning.com.au

Welcome to the first edition of the JBA Alert!

The JBA ALERT is a monthly newsletter from JBA Urban Planning Consultants + TCW Consulting.

The "JBA ALERT" is a new initiative to keep staff and key JBA clients informed of current planning issues and what's happening at JBA.

In this first edition, we review the planning reform discussion paper, latest round of subregional strategies, and the implications of the new planning panel in Ku-ring-gai. JBA has also been very busy over the last few months, with several large projects now on public exhibition.

We hope you enjoy reading our first edition and we'd welcome any feedback or suggestions. If you don't wish to receive the newsletter, please click [unsubscribe](#) and we'll remove your name from the distribution list.

Kind regards,

Kathryn Werner (editor)

Planning Reform Discussion Paper

Minister for Planning Frank Sartor MP released a [discussion paper](#) late last year foreshadowing some of the most significant changes to the NSW planning system since the commencement of the *Environmental Planning and Assessment Act in 1979*.

The paper contains more than 90 recommendations to improve the planning system, including:

- A new DA regime that directs projects of State and regional planning significance away from Councils to the Minister or a newly created Planning Assessment Commission or Joint Regional Planning Panel for approval;
- Increasing the use of exempt and complying development, especially for residential, commercial and industrial alterations and additions, with the aim of achieving 50% of development as exempt or complying;
- Improving the accountability of the certification process by limiting the number of certificates a certifier can issue in a calendar year, and accreditation of council staff acting as certifiers;
- Tailoring DA assessment and local plan-making systems to the size and complexity of proposals; and
- Initiatives to reduce the processing times for LEPs and DCPs.

Submissions on the reform package must be lodged with the Department of Planning by 8 February 2008.

JBA Staff and Partners have been actively involved in the preparation of submissions on the discussion paper for the Planning Institute of NSW, the Property Council of Australia and the Heritage Council of NSW.

In This Issue

Click on headlines for more detail...

Welcome to the first edition of the JBA Alert!

Planning reform discussion paper

Subregional strategies released

Growth centres moving ahead

Planning panel for Ku-ring-gai

New city strategies and LEPs

Julie Bindon appointed as Planning Institute President

JBA Projects Update

JBA Activities

JBA Staff

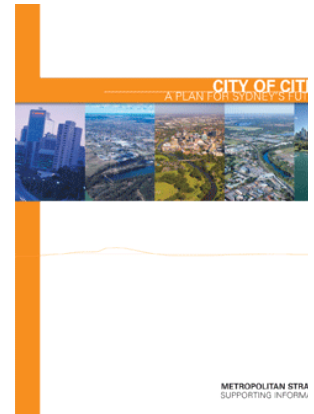
For more information and feedback on this newsletter, please contact Kathryn Werner on:
T: 02 9956 6962
E: jbaalert@jbaplanning.com.au
W: www.jbaplanning.com.au

Subregional Strategies released by DoP

[Draft strategies](#) covering the majority of the Sydney metropolitan region have now been released by the Department of Planning for comment. The strategies establish housing and employment targets for each of the 10 subregions in Sydney, as well as identifying centres and corridors as having strategic importance. All of this was foreshadowed in the *Metropolitan Strategy for Sydney: City of Cities*.

Strategies for the following regions are on public exhibition until 28 March 2008:

- South subregion – for the local government areas of Canterbury, Hurstville, Kogarah, Marrickville, Rockdale and Sutherland;
- South west subregion – for the local government areas of Camden, Campbelltown, Liverpool and Wollondilly, and includes the South West Growth Centre;
- North west subregion – for the local government areas of Baulkham Hills, Blacktown, Blue Mountains, Hawkesbury and Penrith;
- West central subregion – for the local government areas of Auburn, Bankstown, Fairfield, Holroyd and Parramatta.

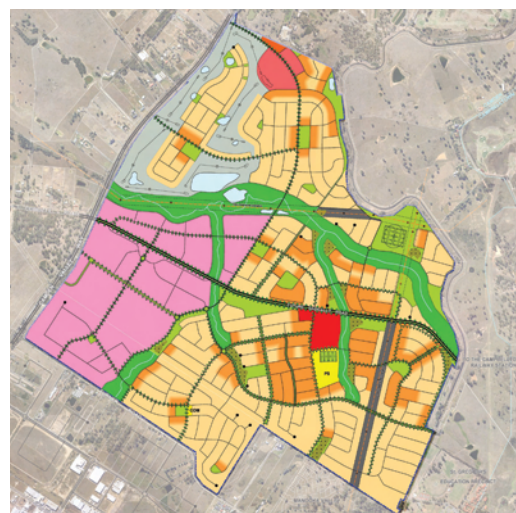
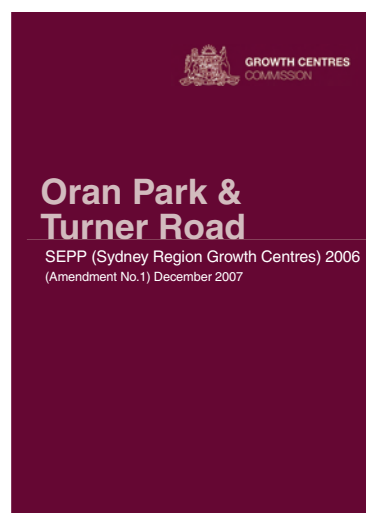


Growth Centres moving ahead

Development Control Plans for the first precincts in the North West and South West Growth Centres have been finalised. The DCPs, which were prepared by JBA, commenced following the gazettal of the State Environmental Planning Policy (Sydney Region Growth Centres) in December 2007.

The Growth Centres SEPP was the first to receive Biodiversity Certification. Certification means that land affected by the SEPP is classified as either “Certified” or “Not Certified”. Certified areas require no further threatened species assessment for development proposals, while “Not Certified” areas still require threatened species assessments for development. There is no change to the zoning or approval processes in these areas.

More information is available on the Growth Centres Commission [website](#), or contact Lesley Bull at JBA on lbull@jbaplanning.com.au.



In This Issue

Click on headlines for more detail...

Welcome to the first edition of the JBA Alert!

Planning reform discussion paper

Subregional strategies released

Growth centres moving ahead

Planning panel for Ku-ring-gai

New city strategies and LEPs

Julie Bindon appointed as Planning Institute President

JBA Projects Update

JBA Activities

JBA Staff

For more information and feedback on this newsletter, please contact Kathryn Werner on:
T: 02 9956 6962
E: jbaalert@jbaplanning.com.au
W: www.jbaplanning.com.au

Planning Panel for Ku-ring-gai

The Minister for Planning has [appointed](#) a panel to resolve plans for the Ku-ring-gai town centres, and to deal with development applications worth more than \$30 million, or which have not been determined within 90 days. It will also develop a planning instrument to control dual occupancy development. Council will retain responsibility for preparation of the new Comprehensive Local Environment Plan and for Section 82 reviews of development applications.

The panel will include:

- Elizabeth Crouch (Chair) – previously Chief Executive, Industry Policy, Housing Industry Association. Ms Crouch has extensive experience in housing policy and economics, planning and development and environmental initiatives in the housing sector;
- Kerry Bedford – has extensive experience in planning and development matters in the public and private sectors; and
- Bill Tsakalos – has extensive experience in architecture, urban design and development of large urban sites for public and private clients.

The panel came into effect on 21 January 2008. However, [Ku-ring-gai Council](#) has decided to launch a legal challenge against the appointment of the panel, disputing the Department of Planning's claims about delays in determining development applications and Ku-ring-gai has not planned properly for new housing.

New City Strategies and LEPs

New plans for all six of the regional cities identified in the *Metropolitan Strategy for Sydney: City of Cities* have been gazetted.



Plans for Wollongong, Gosford, Liverpool, Parramatta, Penrith and Newcastle were prepared by the Department of Planning in conjunction with local councils and stakeholders, and include new local environmental plans, development control plans and contribution plans for each of the cities.

Requirements for design competitions are embedded in each of the LEPs, and development contributions levied under Section 94A of the Environmental Planning and Assessment Act 1979 up to a maximum of 4 %.

The new plans are generally in accordance with the Standard Local Environmental Plan.



In This Issue

Click on headlines for more detail...

Welcome to the first edition of the JBA Alert!

Planning reform discussion paper

Subregional strategies released

Growth centres moving ahead

Planning panel for Ku-ring-gai

New city strategies and LEPs

Julie Bindon appointed as Planning Institute President

JBA Projects Update

JBA Activities

JBA Staff

For more information and feedback on this newsletter, please contact Kathryn Werner on:
T: 02 9956 6962
E: jbaalert@jbaplanning.com.au
W: www.jbaplanning.com.au

Julie Bindon appointed as Planning Institute President



JBA founding partner **Julie Bindon** has been appointed as President of the Planning Institute of Australia (NSW Division). Julie's two year term commenced in January 2008, when she took over the role from Anthony Newland.

Julie is also PIA National Economic Planning Chapter Chair and was instrumental in the establishment of the NSW Economic Development Chapter of PIA. Julie is also a member of the New South Wales Heritage Council for 2006/07.

Julie is also currently a member of the New South Wales Heritage Council, commencing on 1 January 2006.

JBA urban planner **Andrew Guyton** has been appointed to the Chair of the NSW Young Planners for a two-year term, taking over from Tim Bainbridge. The PIA Young Planners Group is open to planners with no more than 5 years post graduate experience in planning or a planning related field. For more information about the group, contact Andrew!



JBA Projects Update

Recently on exhibition:

- Huntlee New Town, Branxton
- Tourist Facility, Cattle Bay, Eden
- Frasers Broadway (CUB Site)
- Macquarie University Library
- Darling Walk, Darling Harbour
- 33-35 Bligh Street, Sydney



"Chatswood Chase Shopping Centre"

The Minister for Planning recently approved the refurbishment and expansion of **Chatswood Chase Shopping Centre**, the assessment of which was delegated to Willoughby City Council by the Department of Planning. JBA prepared the Part 3A application, on behalf of Colonial First State Property Management.

JBA Activities



The JBA dragon-boating team, under the expert guidance of national championship-winning JBA Associate **Gordon Kirkby**, have commenced training for the City of Sydney Chinese New Year dragon boat festival on 17 February at Darling Harbour.

Up to 20 JBA paddlers will be striving to reach the finish line ahead of other corporate teams.

In This Issue

Click on headlines for more detail...

Welcome to the first edition of the JBA Alert!

Planning reform discussion paper

Subregional strategies released

Growth centres moving ahead

Planning panel for Ku-ring-gai

New city strategies and LEPs

Julie Bindon appointed as Planning Institute President

JBA Projects Update

JBA Activities

JBA Staff

For more information and feedback on this newsletter, please contact Kathryn Werner on:
T: 02 9956 6962
E: jbaalert@jbaplanning.com.au
W: www.jbaplanning.com.au

JBA Staff

JBA Urban Planning Consultants + TCW Consulting has been expanding over recent months, with experienced strategic and statutory planners joining both our Sydney and Wollongong offices. The following people have joined JBA over the past 6 months.



Oliver Klein joined JBA as a Principal Planner in late 2007. Oliver was formerly Team Leader of the Social Infrastructure Team and Acting Director of the Strategic Assessments Branch of the Department of Planning.

Aaron Bowden, a Senior Planner at JBA, previously worked with the Department of Planning, local government and in consulting. He is experienced in statutory planning, strategic planning and environmental impact assessment.



Kim Bauer has been appointed as a Senior Planner. A member of the NSW PIA Urban and Regional Planning Chapter Committee, Kim has extensive experience in the preparation of Statement of Environmental Effects, rezoning applications, and masterplan proposals for large scale projects.

Claire Betteridge joined JBA as a Senior Planner in January 2008. Claire's experience ranges from single dwellings to major residential, commercial and mixed use projects in both urban and rural environments.



Craig Schulman has joined JBA as an Urban Planner. Craig joined JBA from the City of Sydney, where he prepared and assessed a range of applications, prepared written evidence for planning appeals and appeared as an expert witness for Sydney City Council.

Jenna Tuite joined JBA's Wollongong office as an Urban Planner in 2007. Jenna's experience includes preparation of statements of environmental effects, Section 96 applications, planning advice, SEPP 10 assessments and masterplans.



- Ben Dowler has joined JBA as an urban planner intern.
- Principal Planner Elise Crameri has also recently returned to JBA after maternity leave.
- Congratulations to Principal Planner Amanda Harvey on the birth of her son Tom in October 2007 – Amanda is now on maternity leave.